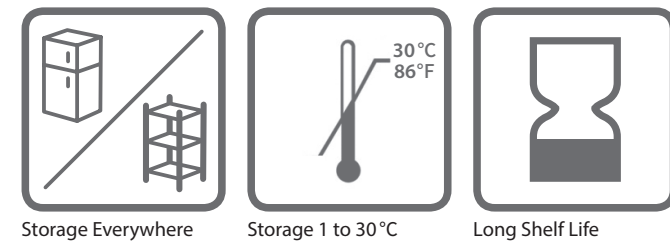


## Compact

- Unlimited Stackable



## Dry



Reliable Quality Made in Japan

### Total Viable Count CompactDry “Nissui” TC

AOAC / MicroVal / NordVal



#### Incubation Temperature

35 ± 1°C  
for raw meat and poultry  
30 ± 1°C  
for all other claimed matrixes

#### Incubation Time

48 ± 3 hours

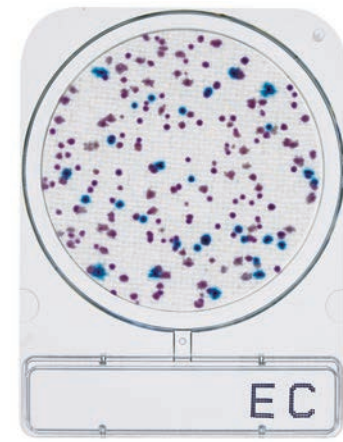
#### Interpretation

All colonies



### Escherichia coli and Coliform CompactDry “Nissui” EC

AOAC / MicroVal / NordVal



#### Incubation Temperature

35 ± 1°C

#### Incubation Time

24 ± 2 hours

#### Interpretation

**E. coli** : Blue / Blue purple colonies  
**Coliform** : Total number of both red and blue colonies

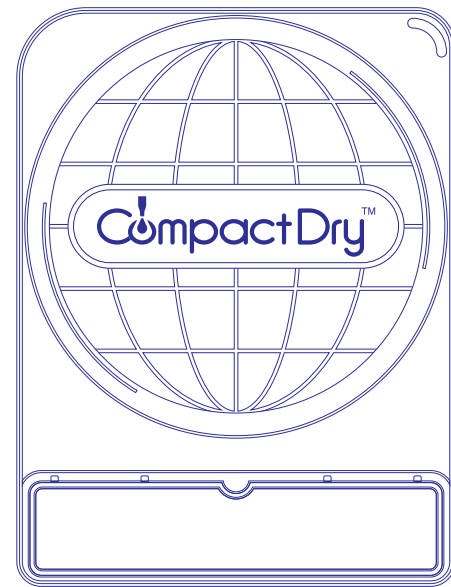


#### CompactDry Product Line

Available for	Name of Product	Storage	Shelf Life	Available for	Name of Product	Storage	Shelf Life
Total Viable Count	CompactDry TC	1-30 °C	24 months after manufacturing	Salmonella	CompactDry SL	1-30 °C	18 months after manufacturing
Escherichia coli and Coliform	CompactDry EC			Enterobacteriaceae	CompactDry ETB		16 months after manufacturing
Coliform	CompactDry CF			Listeria species	CompactDry LS		18 months after manufacturing
Yeast and Mold	CompactDry YM			Salmonella species	CompactDry SL		
Yeast and Mold	CompactDry YMR			Enterococcus species	CompactDry ETC		
Staphylococcus aureus	CompactDry X-SA			Pseudomonas aeruginosa	CompactDry PA		19 months after manufacturing
Vibrio parahaemolyticus	CompactDry VP			Water Heterotroph bacteria	CompactDry AQ		24 months after manufacturing
Bacillus cereus	CompactDry BC			Sample collection	Easy Wiping Kit		2 years after manufacturing

NISSUI PHARMACEUTICAL CO.,LTD. (Japan)

Certification: ISO9001 / ISO13485 / ISO14001  
www.nissui-pharm.co.jp/index\_e.html  
E-mail: customer@nissui-pharm.co.jp  
Tel: +81-3-5846-5701



- Total Viable Count ■
- Escherichia coli and Coliform ■
- Coliform ■
- Yeast and Mold ■
- Staphylococcus aureus ■
- Vibrio parahaemolyticus ■
- Bacillus cereus ■
- Listeria species ■
- Pseudomonas aeruginosa ■
- Enterobacteriaceae ■
- Enterococcus species ■
- Salmonella species ■
- Water Heterotroph bacteria ■

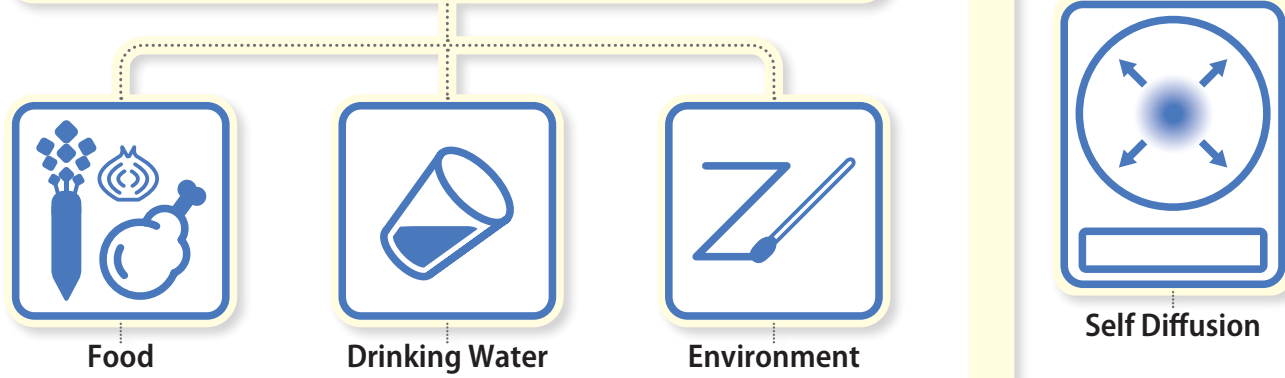


# Why CompactDry™ ?

## How to Use



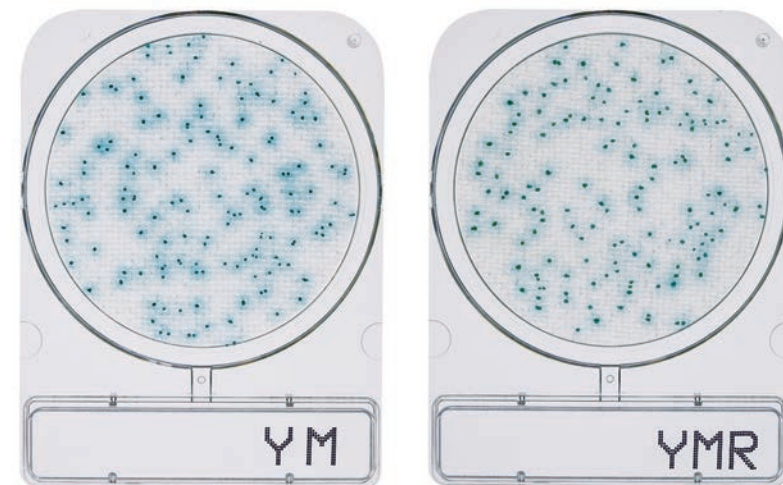
## Major Applications



## Yeast and Mold

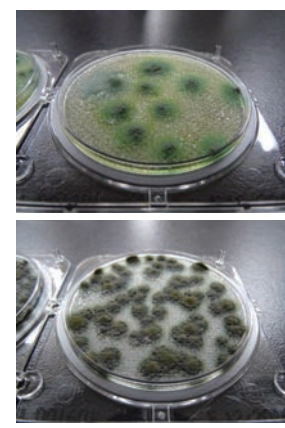
### CompactDry "Nissui" YM / CompactDry "Nissui" YMR

AOAC / MicroVal / NordVal



Incubation Temperature	25 ± 1°C
Incubation Time	YM: 3-7 days YMR: 72 ± 3 hours
Interpretation	<b>Yeast</b> : Blue or white to cream colonies <b>Mold</b> : Cottony colonies with mold colors
	● / ○

### 3D Growth of Molds



Photos Courtesy of NPO Center for Fungal Consultation Japan

### Coliform CompactDry "Nissui" CF

Incubation Temperature	35 ± 1°C
Incubation Time	24 ± 2 hours
Interpretation	Blue / Blue green colonies
	● / ●

### Vibrio parahaemolyticus CompactDry "Nissui" VP

Incubation Temperature	35 ± 2°C
Incubation Time	18-20 hours
Interpretation	Blue / Blue green colonies
	● / ●

### Enterobacteriaceae CompactDry "Nissui" ETB

Incubation Temperature	37 ± 1°C
Incubation Time	24 ± 2 hours
Interpretation	Red / Red-Purple
	● / ●

### Salmonella species CompactDry "Nissui" SL

pre-enrichment w/BPW	35-37°C @20-24 hours
Incubation Time	41-43°C @20-24 hours
Interpretation	<b>Yellow</b> : motility of <i>Salmonella</i> <b>Black</b> : hydrogen sulfide producing <i>Salmonella</i> <b>Green</b> : chromogenic substrate with specific enzyme on <i>Salmonella</i>
	● / ● / ●

### Staphylococcus aureus CompactDry "Nissui" X-SA

Incubation Temperature	37 ± 1°C
Incubation Time	24 ± 2 hours
Interpretation	Light blue / Blue colonies
	● / ●

### Bacillus cereus CompactDry "Nissui" BC

Incubation Temperature	30 ± 1°C
Incubation Time	24 ± 2 hours
Interpretation	Green / Blue colonies
	● / ●

### Enterococcus species CompactDry "Nissui" ETC

Incubation Temperature	37 ± 1°C
Incubation Time	20-24h (22 ± 2h)
Interpretation	Light blue / Blue colonies
	● / ●

### Water Heterotroph bacteria CompactDry "Nissui" AQ

Incubation Temperature	44 ± 4 hours @36 ± 2°C 68 ± 4 hours @22 ± 2°C ISO6222 : 1999
Interpretation	Water quality-Enumeration of culturable micro-organisms
	●

### Listeria species CompactDry "Nissui" LS

Incubation Temperature	35 / 37 ± 2°C
Incubation Time	24 ± 2-48 ± 3 hours
Interpretation	Light blue / Blue colonies
	● / ●

<b>Qualitative</b>
<b>Pre-enrichment</b>
half fraser
30°C
24 ± 2 hours
<b>Pre-enrichment</b>
fraser
35-37°C
48 ± 2 hours
<b>Incubation</b>

<b>Quantitative</b>
ISO11290-2
<b>Resuscitation Step</b>
Buffered Peptone Water
20°C
1 hour
<b>Incubation</b>

### Pseudomonas aeruginosa CompactDry "Nissui" PA

Incubation Temperature	35-37°C
Incubation Time	24-48 hours
Interpretation	Red colonies surrounded by a greenish-yellow halo
	● + ●



Interpretation  
Membrane Filter Method  
Light green / Green blue colonies  
● / ●